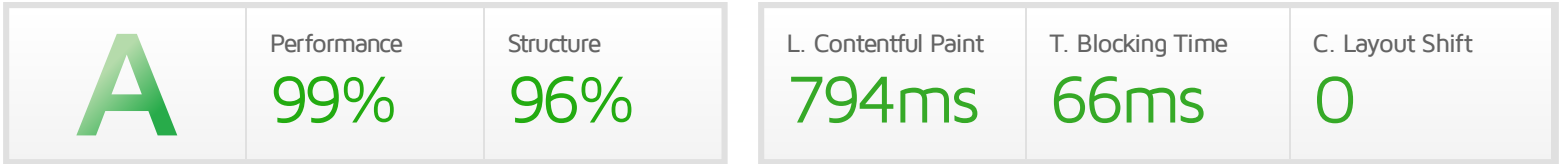




## Performance Report for: <https://herbstritt.website/>

Report generated: Thu, Mar 31, 2022 7:40 PM -0700  
 Test Server Location: London, UK  
 Using: Chrome (Desktop) 90.0.4430.212, Lighthouse 8.3.0



### Top Issues

IMPACT	AUDIT	
Med-Low	Use a Content Delivery Network (CDN)	37 resources found
Low	Serve static assets with an efficient cache policy	Potential savings of 59.7KB
Low	Avoid an excessive DOM size	756 elements
Low	Reduce JavaScript execution time	726ms spent executing JavaScript
Low	Reduce unused CSS	Potential savings of 34.2KB

### Page Details



Total Page Size - 640KB



Total Page Requests - 44



■ HTML 
 ■ JS 
 ■ CSS 
 ■ IMG 
 ■ Video 
 ■ Font 
 ■ Other

### How does this affect me?

Today's web user expects a fast and seamless website experience. Delivering that fast experience can result in increased visits, conversions and overall happiness.

As if you didn't need more incentive, **Google has announced that they are using page speed in their ranking algorithm.**

### About GTmetrix

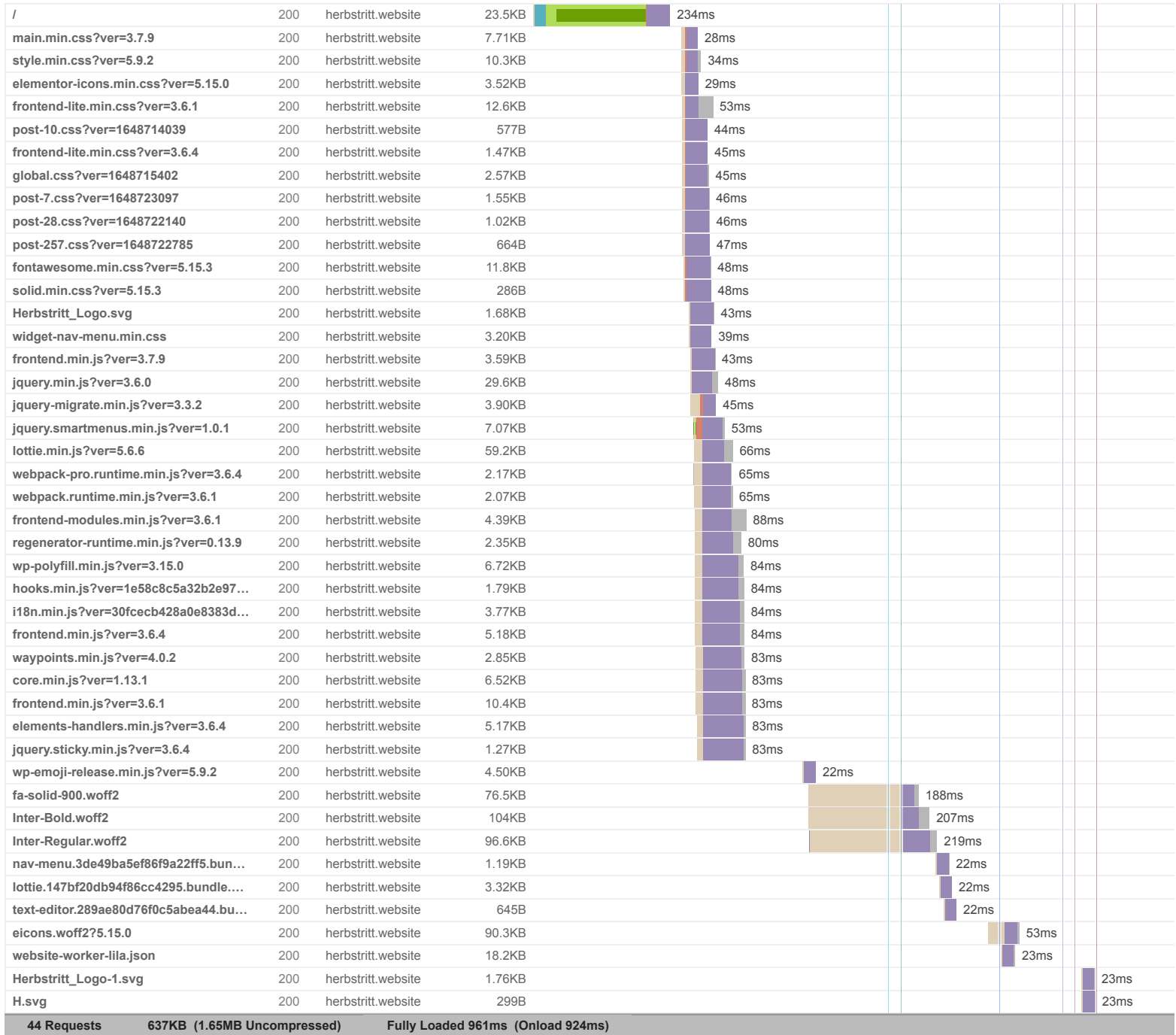


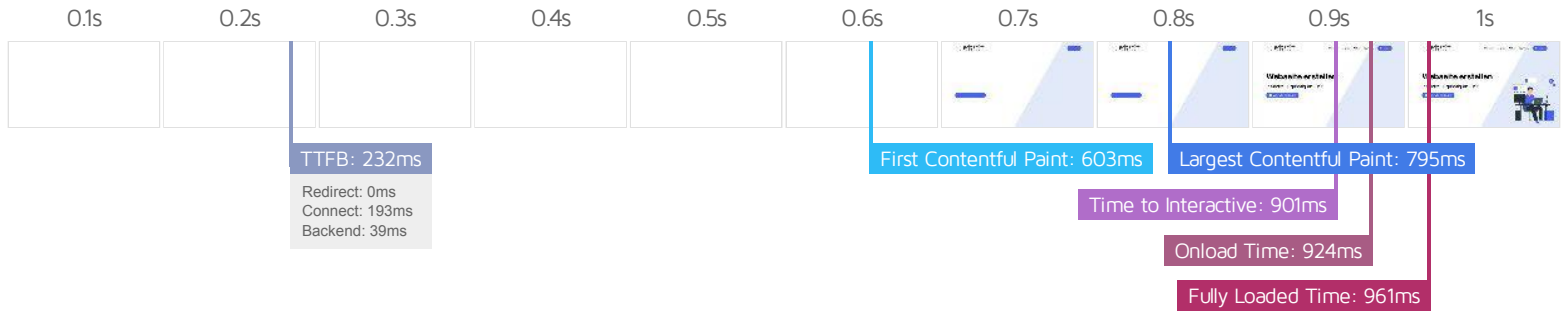
GTmetrix is developed by the good folks at Carbon60, a Canadian hosting company with over 26 years experience in web technology.

<https://carbon60.com/>

The waterfall chart displays the loading behaviour of your site in your selected browser. It can be used to discover simple issues such as 404's or more complex issues such as external resources blocking page rendering.

## Herbsttritt Webdesign – günstig Website erstellen





### Performance Metrics

<p><b>First Contentful Paint</b></p> <p>How quickly content like text or images are painted onto your page. A good user experience is 0.9s or less.</p>	<p>Good - Nothing to do here</p> <p><b>603ms</b></p>	<p><b>Time to Interactive</b></p> <p>How long it takes for your page to become fully interactive. A good user experience is 2.5s or less.</p>	<p>Good - Nothing to do here</p> <p><b>901ms</b></p>
<p><b>Speed Index</b></p> <p>How quickly the contents of your page are visibly populated. A good user experience is 1.3s or less.</p>	<p>Good - Nothing to do here</p> <p><b>774ms</b></p>	<p><b>Total Blocking Time</b></p> <p>How much time is blocked by scripts during your page loading process. A good user experience is 150ms or less.</p>	<p>Good - Nothing to do here</p> <p><b>66ms</b></p>
<p><b>Largest Contentful Paint</b></p> <p>How long it takes for the largest element of content (e.g. a hero image) to be painted on your page. A good user experience is 1.2s or less.</p>	<p>Good - Nothing to do here</p> <p><b>794ms</b></p>	<p><b>Cumulative Layout Shift</b></p> <p>How much your page's layout shifts as it loads. A good user experience is a score of 0.1 or less.</p>	<p>Good - Nothing to do here</p> <p><b>0</b></p>

### Browser Timings

Redirect	0ms	Connect	193ms	Backend	39ms
TTFB	232ms	DOM Int.	421ms	First Paint	603ms
DOM Loaded	626ms	Onload	924ms	Fully Loaded	961ms

IMPACT	AUDIT	
Med-Low	<b>Use a Content Delivery Network (CDN)</b>	37 resources found
Low	<b>Serve static assets with an efficient cache policy</b>	Potential savings of 59.7KB
Low	<b>Avoid an excessive DOM size</b>	756 elements
Low	<b>Reduce JavaScript execution time</b>	726ms spent executing JavaScript
Low	<b>Reduce unused CSS</b>	Potential savings of 34.2KB
Low	<b>Avoid enormous network payloads</b>	Total size was 640KB
Low	<b>Eliminate render-blocking resources</b>	Potential savings of 4ms
Low	<b>Ensure text remains visible during webfont load</b>	3 fonts found
Low	<b>Avoid long main-thread tasks</b>	3 long tasks found
Low	<b>Reduce initial server response time</b>	Root document took 39ms
Low	<b>Avoid large layout shifts</b>	4 elements found
Low	<b>Avoid chaining critical requests</b>	15 chains found
Low	<b>Reduce unused JavaScript</b>	Potential savings of 36.9KB
N/A	<b>Largest Contentful Paint element</b>	1 element found
N/A	<b>Minimize main-thread work</b>	Main-thread busy for 2.2s
N/A	<b>User Timing marks and measures</b>	
N/A	<b>Reduce the impact of third-party code</b>	